

# KE QUBICA LIGHT B51

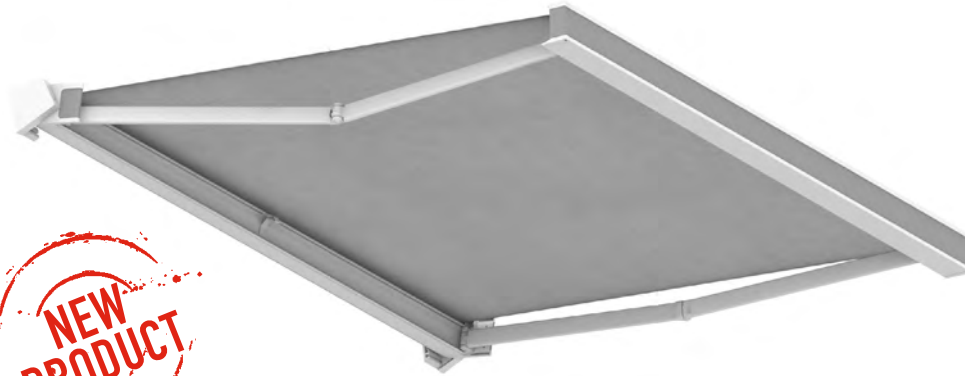
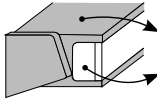
per aumenti TESSUTO e RAL vedi pagine 106/115 - For fabric and RAL increases see at pages 106/115  
 Augmentation TISSU et RAL voir pages 106/115 - Für Aufpreise für RAL und Stoffe S. seiten 106/115



OPACO/MATT OPACO/MATT

COMBINAZIONI COLORE / COMBINATIOS / COMBINAISON / KOMBINATION

	C1	C2	C3	C4	C5	C6	C7	C8	C9	C10	C11	C12	C13	C14	C15	C16
	9010	9010	9010	9010	9006	9006	9006	9006	NERO INVER	NERO INVER	NERO INVER	NERO INVER	RUGGINE	RUGGINE	RUGGINE	RUGGINE
	9010	9006	NERO INVER	RUGGINE	9006	9010	NERO INVER	RUGGINE	NERO INVER	9010	9006	RUGGINE	RUGGINE	9010	9006	NERO INVER



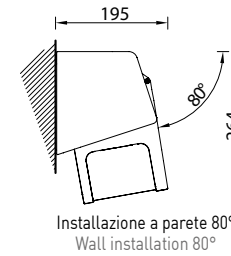
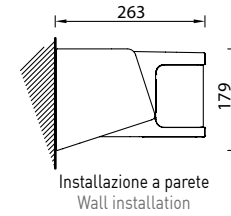
**NEW PRODUCT**

**DISPONIBILE DA GIUGNO 2016**  
**AVAILABLE FROM JUNE 2016**

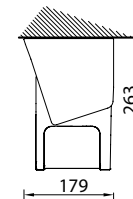
Ingombri minimi della tenda finita - 1 coppia bracci  
 Minimum awning encumbrances - 1 pair arms  
 Encombrentes minimum du store fini - 1 pair bras  
 Minimaler Ausmaß der fertigen Markise - 1 Paar Arme

cm	↔
↻	2 BRACCI
160	196
185	221
210	271
235	296
260	321
310	346
360	396

**! Tessuto saldato di serie (eccetto Liberty, Panama, Resinati)**  
**Fabric welded as standard (except Liberty, Panama, waterproof fabrics)**  
**Toile soudée (sauf Liberty, Panama, Imperméables)**  
**Stoff serienmäßig geschweißt (außer Liberty, Panama, wasserdichte Stoffe)**



Installazione a soffitto  
Ceiling installation



Installazione a soffitto 80°  
Ceiling installation 80°

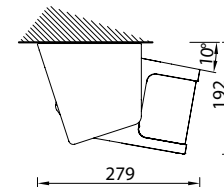


Diagramma di copertura a parete - Wall covering diagram

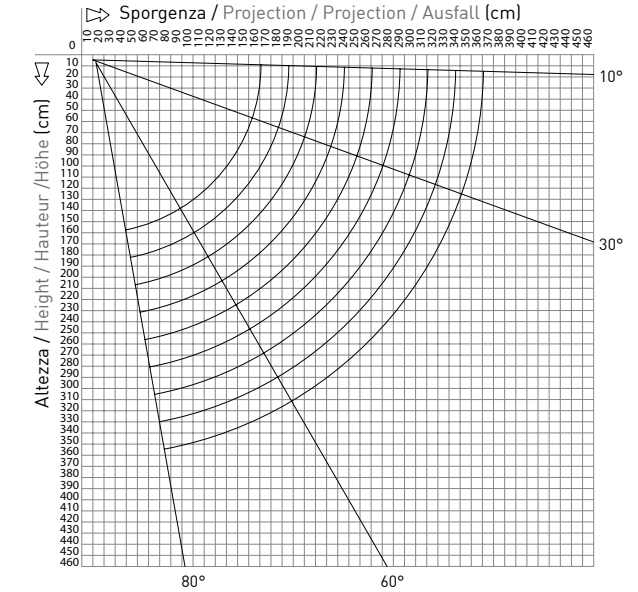


Diagramma di copertura a soffitto - Ceiling covering diagram

